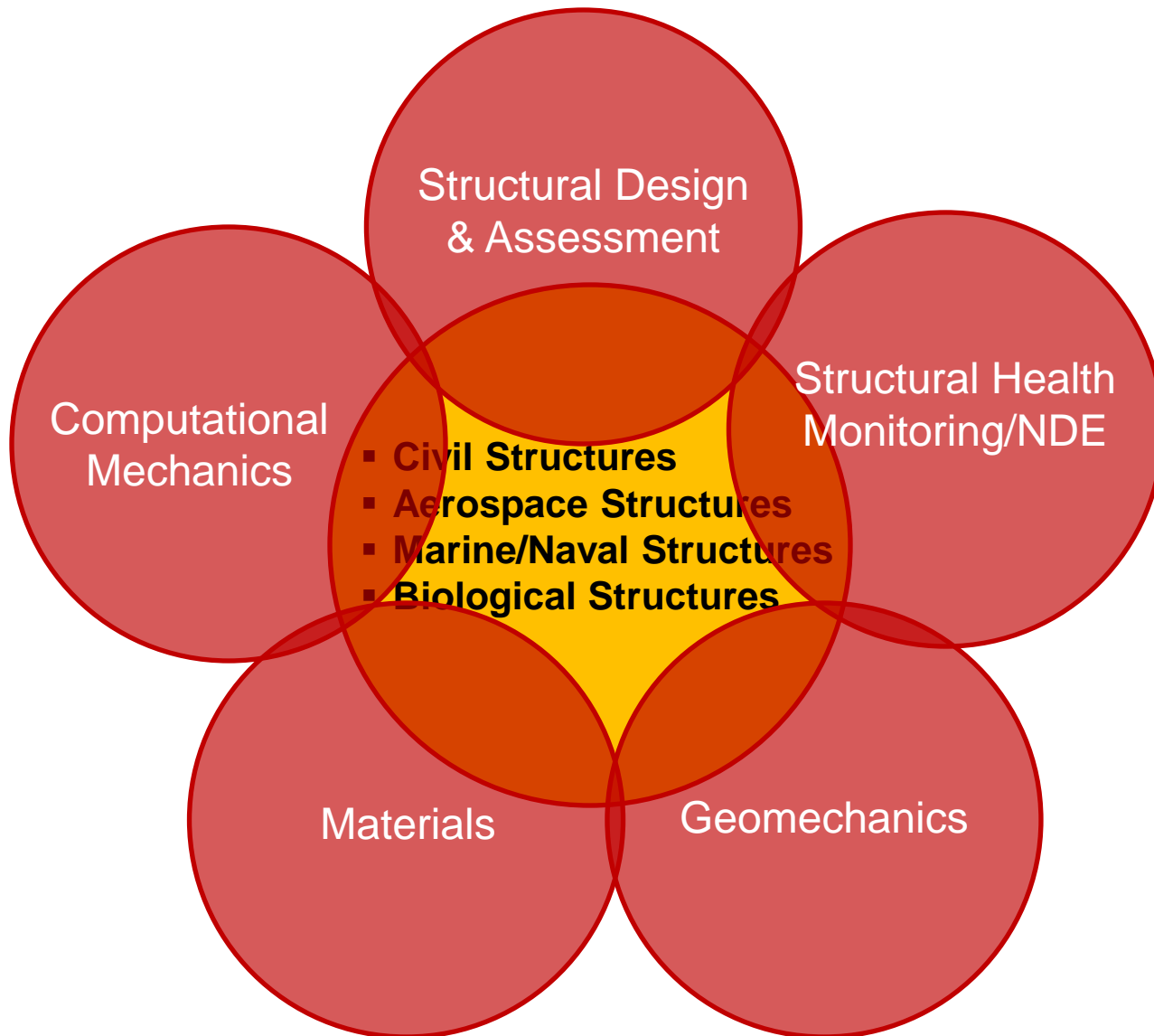


Department of Structural Engineering

Overview







Faculty: 24

UG Students: 588

MS Students: 127

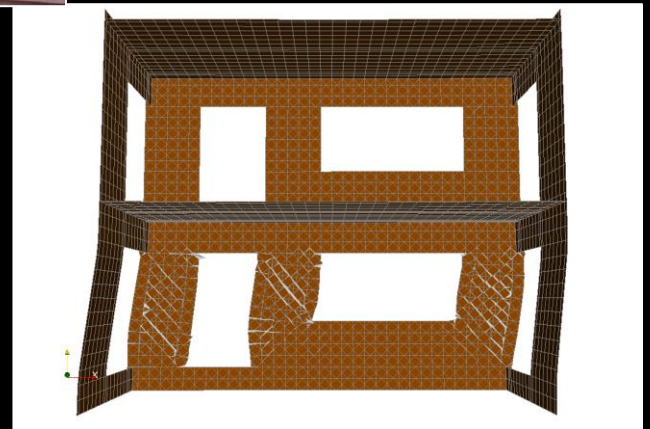
Ph.D. Students: 67

CIVIL STRUCTURES

- Earthquake Engineering
- Blast Protection
- System Identification
- Design and Computation

People

- Joel Conte
- Gil Hegemier
- Tara Hutchinson
- Enrique Luco
- Gilberto Mosqueda
- Jose Restrepo
- Benson Shing
- Chia-Ming Uang
- Lelli Van Den Einde (Engineering Education)

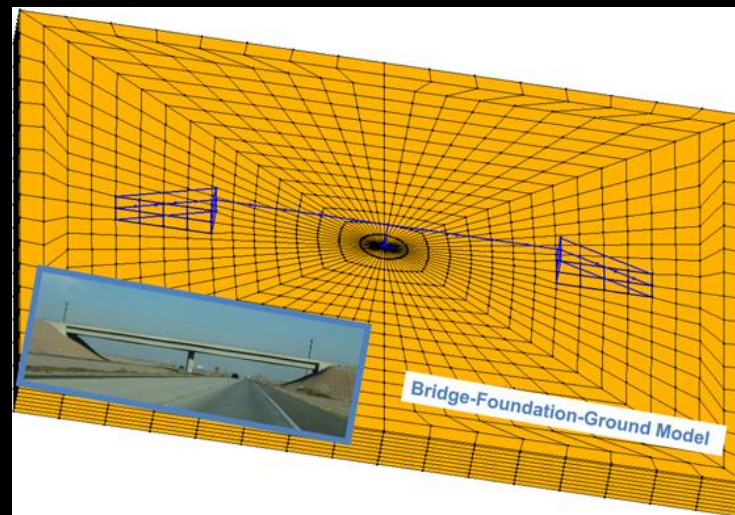


GEOMECHANICS

- Seismic Response of Soils and Foundations
- Soil-Structure Interaction
- Thermal-Hydro-Mechanical Behavior of Soils

People

- Ahmed Elgamal
- Tara Hutchinson
- Enrique Luco
- John McCartney

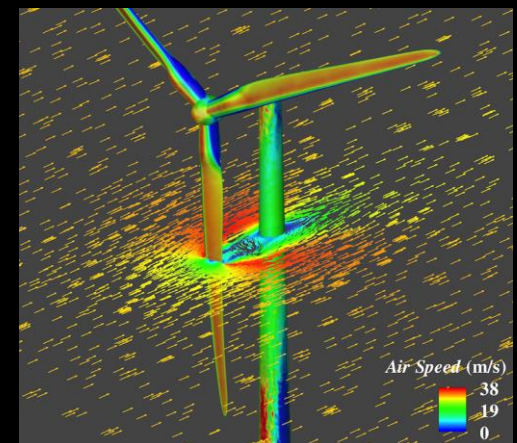
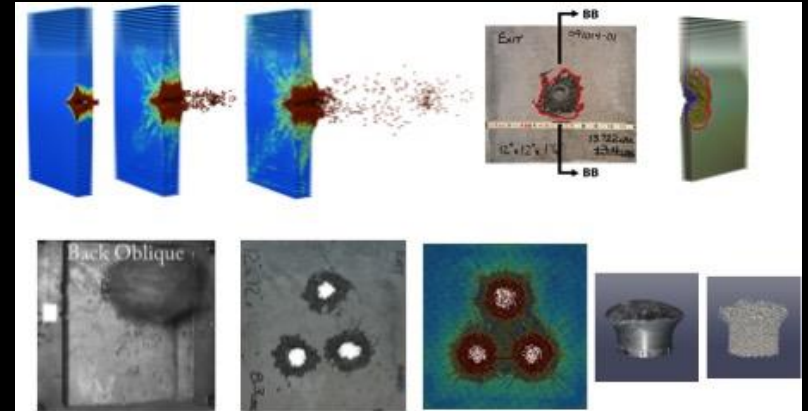


COMPUTATIONAL MECHANICS

- Large Deformation Problems
- Fluid-Structure Interaction
- Isogeometric Analysis
- Impact/Blast
- Mesh-free Finite Element Methods
- Multi-scale Materials Modeling
- Biomechanics

People

- Yuri Bazilevs
- David Benson
- Jiun-Shyan Chen
- Petr Krysl



VISUALIZATION, HERITAGE STRUCTURES

- Virtual Reality
- Distributed and Remote Visualization of Large Data Sets
- Image Data Analysis
- Cultural Heritage Diagnostics

People

- Falko Kuester

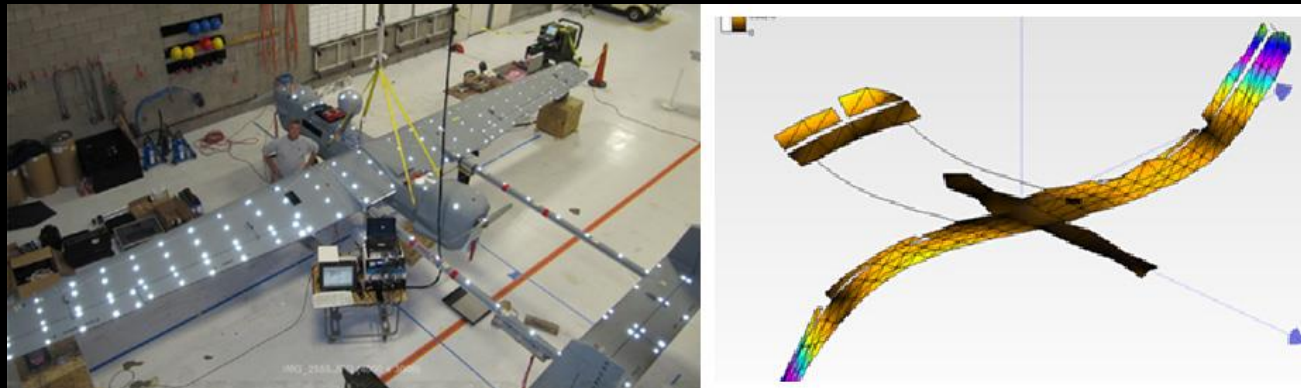


AEROSPACE STRUCTURES

- Aviation Safety
- Impact on Aircrafts
- UAVs
- Structural Optimization
- System Identification
- Composite Materials

People

- Alicia Kim
- Hyonny Kim
- John Kosmatka

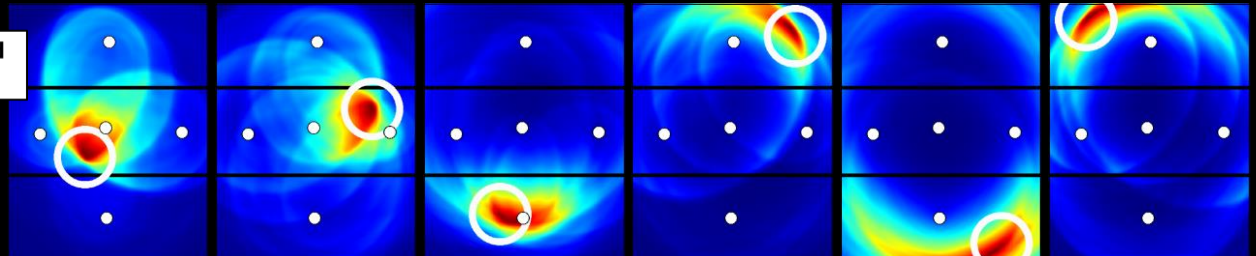
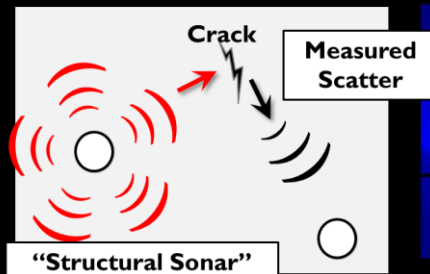
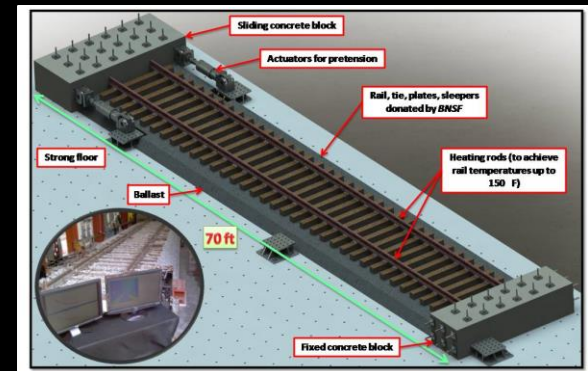


STRUCTURAL HEALTH MONITORING/ NDE

- Damage Detection
- NDE
- Sensors
- Prognosis

People

- Joel Conte
- Francesco Lanza di Scalea
- Kenneth Loh
- Michael Todd

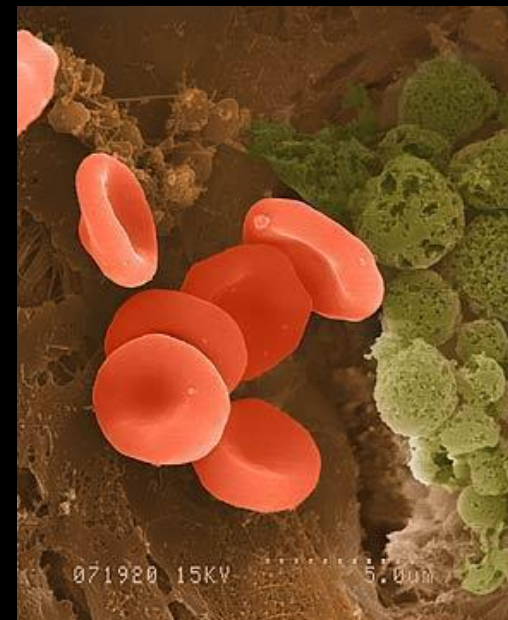
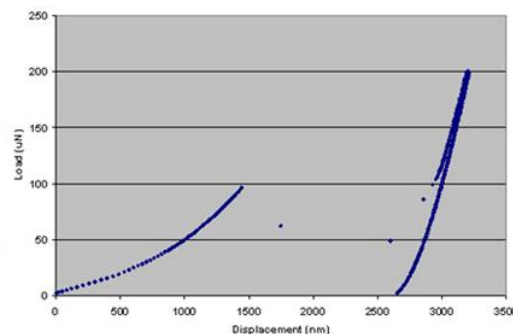
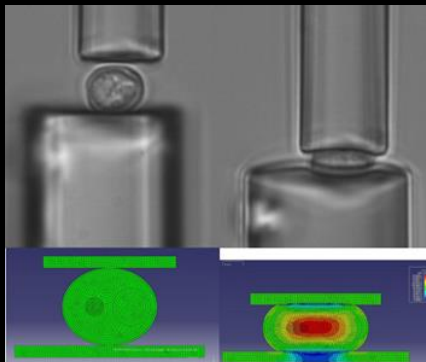
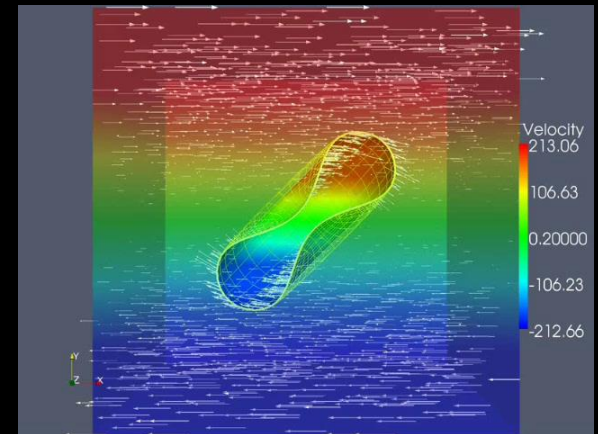
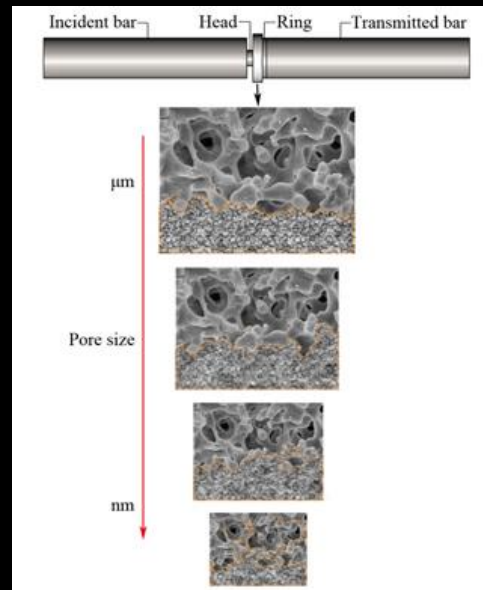


BIOLOGICAL STRUCTURES, BIOMIMETICS, MATERIALS

- Nano Materials
- Cell Structures
- Porous Materials

People

- Robert Asaro
- Yu Qiao
- Qiang Zhu



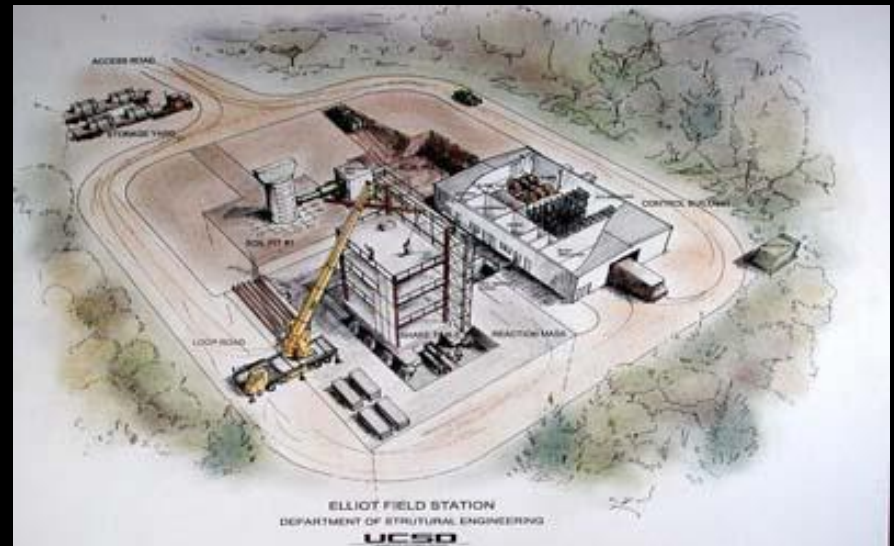


SME Building

Charles Lee Powell Labs for Large-Scale Testing



General Campus



Englekirk Structural Engineering Center



SME Building

- Aerospace Structures Lab
- Advanced Composites Labs
- Aviation Safety Lab
- Computation Lab
- Geomechanics Labs
- Materials Research Labs
- Structural Health Monitoring & NDE Labs
- Visualization Lab



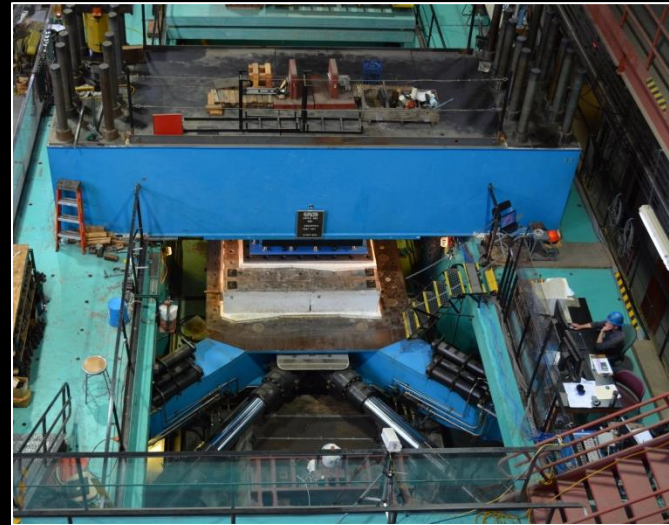
Structural Systems Lab



Composite Structures Lab



Structural Components Lab



SRMD (Structural Response Modification Device) Testing Facility

SRMD TESTING FACILITY

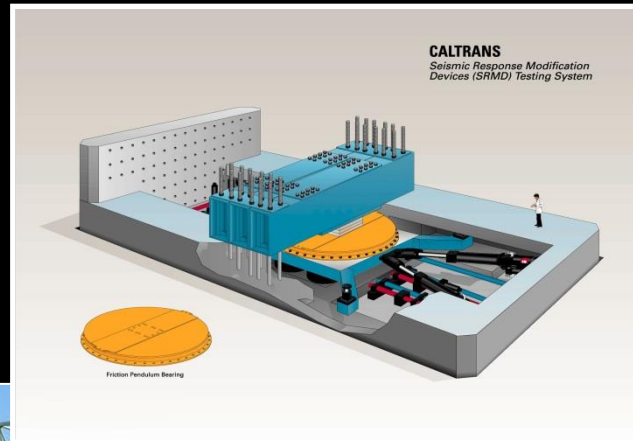


Rubber Isolator

I-40



Base-Isolation Devices



Friction Pendulum Isolator

Benicia-Martinez

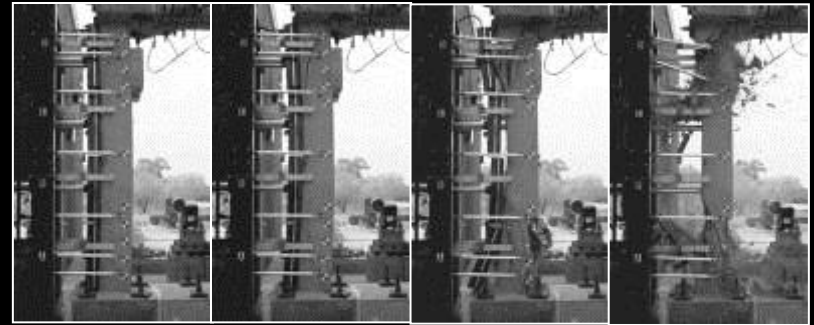


ENGLEKIRK STRUCTURAL ENGINEERING CENTER

Large High Performance Outdoor
Shake Table (LHPOST)



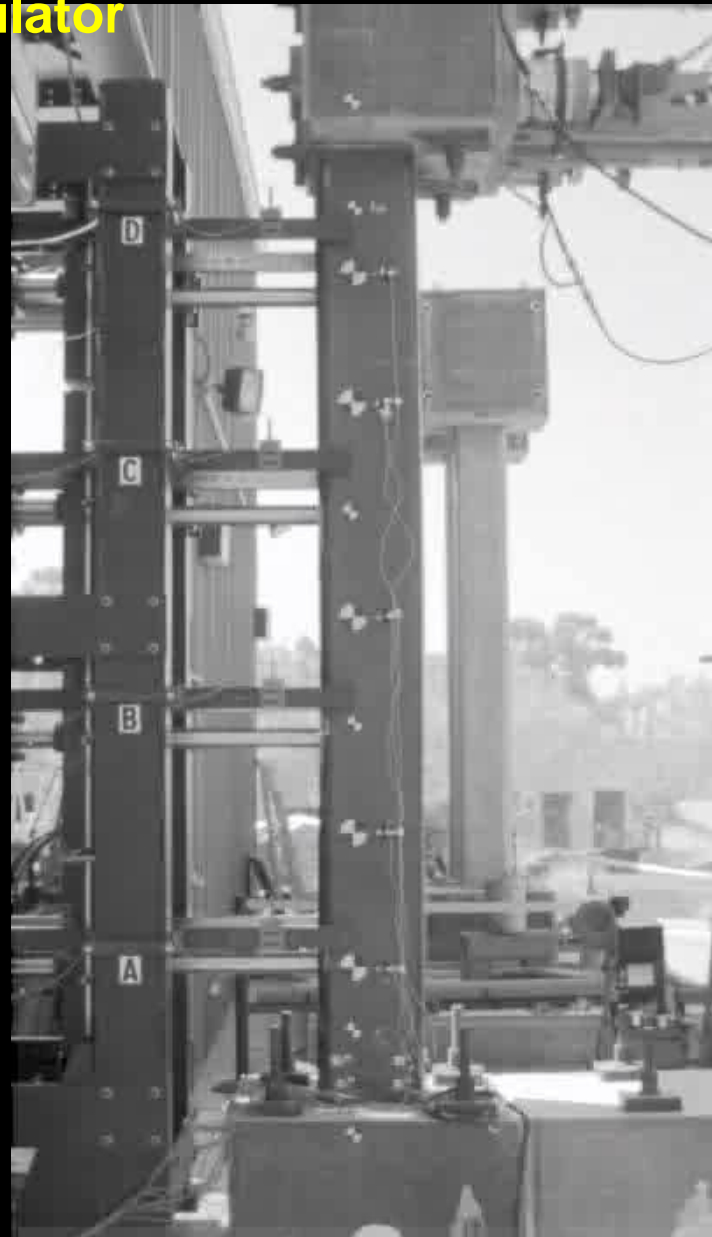
Blast and Impact Simulator



Soil-Structure Interaction (SSI)
Testing Facility



Blast Simulator



Thank you!

